



Every call equipped with Bullard.

Confidently equip your team with the most effective tools for your department's needs. Decision-making thermal imagers armed with X-Factor Image Enhancement technology and proven durability.

Coming Soon



QXT™ Pro

- Top performance
- 640 x 480 resolution at 60 Hz
- X-Factor 2.0 Image Enhancement

Coming Soon



NXT™ Pro

- Top performance
- 640 x 480 resolution at 60 Hz
- X-Factor 2.0 Image Enhancement
- NFPA 1801 Certifications in process

Coming Soon



DXT™

- Detailed images, balances budget and performance
- 320 x 240 resolution at 60 Hz
- X-Factor 2.0 Image Enhancement



TXS™

- One-button simplicity at an incredible value
- 320 x 240 resolution at 30 Hz
- X-Factor Lite Image Enhancement

www.bullard.com

Sharper than ever.

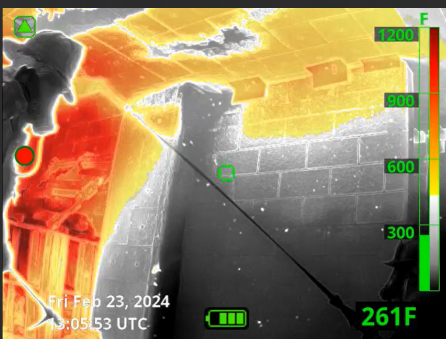
Bullard X-Factor Image Enhancement technology sharpens the distinction between objects and backgrounds and optimizes the image for greater clarity. Instantly understand your environment, find your way, locate victims.

Elements like crisp white edge highlighting and exceptionally vivid images are key components of X-Factor Image Enhancement. This technology helps you recognize objects faster and identify flow patterns to more quickly understand the scene.



X-Factor Image Enhancement: What it means.

Super Red Hot



It's intuitive colorization. Kicking in at 500° F (260° C), this color threshold visually alerts firefighters when temperatures approach a range that may begin to damage personal protective equipment. Consistent and transparent color scheme for quick scene assessment.

Sharpest Details



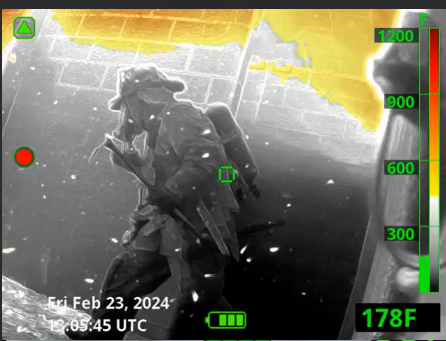
Highlights essential information. X-Factor 2.0 Image Enhancement features crisp white edge highlighting to make important details easy to identify and understand. Sharpest details available in X-Factor 2.0.

People-Focus



Critical for victim search. The entire image stays bright and detailed, helping reveal people even with high-heat elements elsewhere in the scene. People-focus available in X-Factor 2.0.

Seamless Gain Transition



Seamless operation. No forced shuttering when transitioning between hotter and cooler areas of a scene.

Fluid Viewing Technology



No choppy images. Smooth movement with fluid scenes. Opt for a high refresh rate to gather max info. Identify flow paths and avoid missing key details.



SEE These Scenes In Action!



SCAN ME

Features that empower.

Bullard Thermal Imaging features can help provide critical information, transforming the thermal imager into a versatile tool for many applications and helping speed up specific tasks.

Basic Feature Pack

- Thermal Throttle
- Hot Area Detector
- Cold Area Detector
- Zoom

Advanced Feature Pack

- Thermal Throttle
- Hot Area Detector
- Cold Area Detector
- Zoom
- Image Capture
- Video Recording
- On-Screen Playback

Thermal Throttle



Find hidden heat sources during overhaul. Patented technology empowers users to throttle sensitivity up and down to visually isolate warmer items in any type of scene.

Hot/Cold Area Detector



Save time with instant info. Instantly identify the hottest area of the scene with Hot Area Detector. Use Cold Area Detector to find the coolest spot on-scene.

Zoom



Get closer to the scene specifics. Dial in to details even from a distance with the Zoom feature. Helpful when localizing a hot spot or performing outdoor search.

Image Capture



Quickly capture thermal snapshots. Helpful in creating customized training materials.

Video Recording



Record thermal videos. Easily downloadable for use in training sessions.

On-Screen Playback



Facilitate timely training and technical discussions. This feature is training gold. Upon capturing thermal images or video during training, utilize the on-screen playback.

Customized deployment.

Each thermal imager model is optimized to balance essential features and top-quality images with your department's budget.

X-Factor Lite

Delivers exceptional resolution, with low-lag processing and crisp details, including:

- Super Red Hot colorization
- Fluid viewing technology
- Seamless gain transition

X-Factor 2.0

Offers highest performance, includes items from patented X-Factor Lite technology, plus including even more:

- Highest resolutions
- Vivid images with sharpest details
- People-focus



FEATURES	TXS	DXT	QXT Pro	NXT Pro
Deployment	Lightweight decision-maker. Incredible value.	Versatile Decision-making details.	Sharpest image. Best performance.	Sharpest image. Best performance, NFPA 1801 Certifications in process
Image Enhancement	X-Factor Lite 320 x 240 resolution	X-Factor 2.0 320 x 240 resolution	X-Factor 2.0 640 x 480 resolution	X-Factor 2.0 640 x 480 resolution
Refresh Rate	30 Hz	60 Hz	60 Hz	60 Hz
Power	Replaceable battery; Up to 6 hours; Dual-bay charger	Internal battery; Up to 8.5 hours; Wireless charger	Internal battery; Up to 6.5 hours; Wireless charger	Internal battery; Up to 6.5 hours; Wireless charger
Options	Single button operation	Basic & Advanced feature packs	Basic & Advanced feature packs	Basic & Advanced feature packs
Warranty	CareFree® 5-Year Battery 2-Year	CareFree® 5-Year Battery 5-Year	CareFree® 5-Year Battery 5-Year	CareFree® 5-Year Battery 5-Year

Bullard Center
2421 Fortune Drive
Lexington, KY 40509 • USA
877-BULLARD (285-5273)
Tel: +1-859-234-6616

Americas Operations
1898 Safety Way
Cynthiana, KY 41031 • USA
877-BULLARD (285-5273)
Tel: +1-859-234-6616

Bullard GmbH
Dieselstrasse 8a
53424 Remagen • Germany
Tel: +49-2642 999980

Bullard Asia Pacific Pte. Ltd.
51 Changi Business Park Central 2
#03-04 The Signature
Singapore 486066
Tel: +65 6745 0556